



Industrial
Automation



Product Line Guide for Industrial Automation

→ Find out more
www.bimba.com

1.800.442.4622
cs@bimba.com



Roundline Actuators



Original Line Series
Non-repairable stainless steel body
12 Bore Sizes from 5/16" - 3"



Original Line Three Position
Single cylinder with 3 distinct positions
9/16" - 2" bores



Original Line with Adjustable Cushions
Protection against kinetic energy
3/4" - 3" bores



Original Line MRS
Magnetic piston standard
9/16" - 2-1/2" bores



Original Line Non-Rotating
Square rod design
9/16" - 2-1/2" bores



Original Line PC Series
Delrin end caps
9/16" - 2" bores



Original Line All Stainless Steel
Stainless steel body and end caps
Food grade grease
5/16" - 3" bores



Original Line Z-Line
Heavy duty roundline
3/4" - 2" bores



Original Line Rod Lock
Built-in mechanical lock
3/4" - 3" bores



Hole Punch Cylinder
1-4" - 5/8" diameter cutter and non-cutter options available



Position Feedback
Internal transducer for feedback or control
1-1/16" - 3" bores



Centaur
Repairable roundline
1-1/4" - 3" bores



Double-Wall
NFAA interchangeable cylinder with an epoxy coated outer body
1-1/2" - 4" bores



Repairable Stainless Steel Design
Food grade grease and secondary wiper
1-1/2" - 8" bores



Single Acting Air Clamps
Gripping power on extend stroke and spring retract
15 different models

Compact Actuators



Flat-1
8 bore sizes from 9/16" - 4" bores



Flat-II
Non-rotating twin rod
3/4" - 2" bores



Square Flat-1
Horizontal and side mounting
3/4" - 4" bores



Square Flat-II
Horizontal and side mounting with non-rotating Twin Rod
3/4" - 2" bores



Stainless Steel Flat-1
Corrosion resistant, IP69K rated
9/16" - 4" bores



Flat-1 Multiple Power
Available in 2, 3 and 4 stage force multiplier
2-1/2", 3" and 4" bores



Flat-1 Multiple Position
Compact with three distinct positions
9/16" - 4" bores



EF-1
Extruded body with interchangeable dimensions
12mm - 100mm bores



EF-2
Guided and non-rotating extruded body
12mm - 100mm bores



EFP/EFQ
Multi-position and multi-power extruded body designs
12mm - 100mm bores



online configurators available for cylinders, valves, and FRLs:
www.bimba.com



Actuators



Twin Bore
Basic, double end rod and air table
styles available
6mm - 32mm bores



NPA
Single bore air table with precise
load guiding
12mm, 20mm, 32mm bores



Stopper Cylinder
Made to withstand side impact
loading
32mm bore



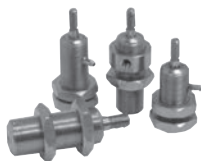
Twist Clamp
Combination rotary and linear
motion
23mm - 63mm bores



Extruded Flat Lift Table
Four guide shafts for supporting
vertical lifting
50mm, 80mm, 100mm bores



Space Saver
Unique compact design
3/4" - 4" bores



Miniature Air Cylinders
MF and MA series for extremely
tight spaces
1/4", 3/8", and 1/2" bores

NFPA Actuators



PA Series
NFPA interchangeable, cost
effective
1-1/2" - 4" bores



TA Series
Aluminum body NFPA inter-
changeable
1-1/2" - 12" bores



TD Series
Heavy duty aluminum body NFPA
interchangeable design
1-1/2" - 8" bores



FM Series
Aluminum body NFPA inter-
changeable design with sleeve nut
constructions
1-1/2" - 8" bores



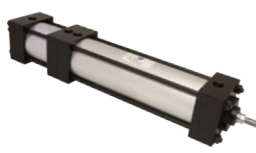
SS Series
Heavy duty stainless steel cylin-
ders interchangeable design
1-1/2" - 8" bores



TAS Series
Steel body NFPA interchangeable
design
1-1/2" - 8" bores



TRA Series
Triple rod for non-rotating
1-1/2" - 8" bores



Back to Back
Two cylinders combined into one
unit
1-1/2" - 8" bores



Multi-Stage
Multiple pistons used to increase
force
1-1/2" - 8" bores



Stainless Steel Multi-Stage
Multiple piston design in a stain-
less steel body
1-1/2" - 8" bores



Three Position
Single cylinder unit with 3 distinct
positions
1-1/2" - 8" bores



FM with Rod Lock
Aluminum body design with 100%
ball bearing rod lock
1-1/2" - 6" bores



Position Feedback
Offers continuous position sensing
1-1/2" - 6" bores

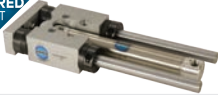


Bench Top Press
Heavy duty steel keyed and bolted
construction
5" bore

Find out more



Guided Actuators



TE Series Thruster
Composite bearings for high loads
9/16" - 3" bores



T Series Thruster
Ball bearings for high precision
9/16" - 3" bores



ET Series Thruster
Extruded body, compact profile
12mm - 32mm bores



PneuMoment®
Heavy moment loading capability
1-1/16" - 2-1/2" bores



Multiple Position Thruster
3 positions in composite or ball bearing options
9/16" - 2" bores



4 Shaft T Series
Higher load ball bearing thruster
2", 2-1/2", 3" bores



Movable Housing Thruster
Composite or ball bearing options
9/16" - 3" bores

Rodless Actuators



Ultran Rodless
Magnetically coupled
5/16" - 2" bores



Ultran Rodless Slide
Magnetically coupled with built in guide
5/16" - 2" bores



Ultran High Load Slide
High moment load capability
1-1/16", 1-1/4", & 1-1/2" bores



Ultran Band
Mechanically coupled
18mm - 63mm bores

Rotary Actuators



Pneu-Turn
Rack and pinion, single and double rack configurations
9/16" - 2" bores



Pneu-Turn 3 Position
Three distinct rotation positions, single and double rack configurations
9/16" - 2" bores



Position Feedback Pneu-Turn
Transducer installed for feedback or control
1-1/2" - 2" bores

ISO Actuators



ISO 15552
Extruded body conforms to ISO 15552 standards
32mm - 125mm bores



ISO 6432
Roundline cylinder conforms to ISO 6432 standards
8mm - 25mm bores



online configurators available for cylinders, valves, and FRLs:
www.bimba.com



Hydraulic Actuators



Original Line Cylinder
With 'HL' option - 250 PSI
5/16" - 3" bores



500 Series Original Line
Replaceable rod stud - 500 PSI



Standard Aluminum 'TA' & 'FM'
with 'TH' option - 400 PSI
1-1/2" - 12" bores



MH Series
NFPA tie-rod for up to 1500 PSI
1-1/2" - 8" bores



HH Series
NFPA tie-rod for up to 3000 PSI
1-1/2" - 8" bores



CMH Series
Compact medium pressure hydraulic up to 2030 PSI
25mm - 101mm bores



CHH Series
Compact high pressure hydraulic up to 3000 PSI
25mm - 76mm bores

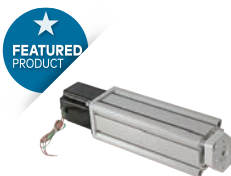
Electric Actuators



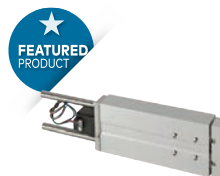
Norgren ELION Rod-style
Stroke up to 59", Up to 6,800 lbs. thrust
32, 40, 50, 63, 80, 100mm bores
ISO 15552 ball screw



Norgren ELION Rodless
Stroke up to 18", Up to 337 lbs. thrust
48, 60, 80, 100mm bores
Toothbelt thrust up to 337 lbs
Ball screw thrust up to 2,282 lbs



EFE/T Extruded Flat
Stroke up to 5", Up to 260 lbs thrust
16, 20, 25, 32, 40, 50mm bores



EET Extruded Thruster
Stroke up to 10", Up to 248 lbs thrust
16, 20, 25, 32mm bores
Ideal for high side loading applications



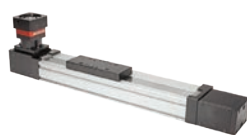
NPET Narrow Profile Table
Stroke up to 8", Up to 248 lbs thrust
20 & 32mm bores
Ideal for cartesian-type and pick & place applications



ST80 Series
Aluminum - rodless
Single rail, belt-driven
Stroke up to 60" +
Dynamic load capacity: up to 6,836 pounds



S Series B80/B110
Aluminum - rodless
Single rail, belt-driven
Stroke up to 10' ft.
Dynamic load capacity: up to 3,462 pounds



S Series B27 Series
Aluminum - rodless
Single rail, belt-driven
Stroke up to 9"
Dynamic load capacity: up to 615 pounds



HSXZ15/HSXZ80
Aluminum - linear robot
T-Bot Construction
X-Axis stroke up to 15"
Y- or Z-Axis stroke up to 11"
Load: up to 562 lbs



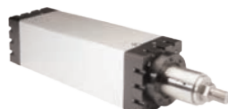
HSXY80
Aluminum - linear robot
H-Bot Construction
X-axis stroke up to 15"
Y- or Z-axis stroke up to 11"
Load: up to 843 lbs



Original Line Electric
Stroke up to 18"
Thrust: up to 350 lbs



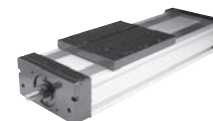
Original Line Electric Thruster
Stroke up to 18"
Thrust: up to 350 lbs



T Series
Ballscrew driven rod style
Stroke up to 5' ft.
Thrust: up to 27,404 lbs



RS Series
Rack and pinion style
Stroke up to 10"
Thrust: up to 556 lbs



LP Series
Dual rail, four bearing block design
Belt stroke up to 60'
Ball stroke up to 4'
Dynamic load capacity: up to 16,275 lbs.

Find out more





TRP Series
 Rack and pinion style
 Stroke up to 40"
 Up to 330 lbs load



IntelliPress
 Press travel 6"
 Up to 12,000 lbs force



AC/ DC Stepper & Servo Motors
 2-phase hybrid step motor
 Standard NEMA 23 and NEMA 34 dimensions



Mitsubishi® Motors
 Servo motors
 50W to 55kW or 48/24VDC models up to 30W
 IP65 and IP67 rated versions available



DC Drive & Programmable Controller
 Up to 10A per phase capability, 8 digital inputs, 4 digital outputs

Grippers



BPGS Series
 Pneumatic gripper system
 Gripping forces up to 450 lbs. at 80 PSI



BPGS Hot Metal Gripper
 Pneumatic gripper system - high temperature
 Gripping forces up to 450 lbs. at 80 PSI
 Max. operating temperature: 1650°F

Switches



Band Mounted
 Edge detection
 10-28 VDC, 50mA rating



Track Mounted
 Edge detection
 10-28 VDC, 50mA rating



Tie-Roded Mounted
 Models available for cylinders with a 5" bore size or greater
 For use with Original Line, Pneu-Turn, Guided Thrusters, Double-Wall, RS cylinders



Digital Pressure
 (2) individually programmed sinking (NPN) or sourcing (PNP) digital outputs
 (1) 1-5V or 4-20mA analog output optional
 IP65 enclosure protection

Sensors



Threaded Proximity Sensors
 End of stroke switches compatible with Ultran® rodless cylinders



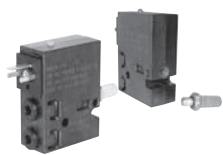
BPT Pressure Transducer
 Pressure ranges from vacuum to 5,000 PSI
 IP67 stainless steel housing
 Accuracy 0.4% FS, BFS



→ online configurators available for cylinders, valves, and FRLs:
www.bimba.com



Directional Control Valves



Isonic®
 Manifold mounted
 Port: PIF 5/32", 1/4"
 Function: 2/2, 3/2, 4/2
 Cv: 0.01 to 0.8
 Voltage: 12-24 VDC, 24-120 VAC



Nova
 Inline solenoid and air pilot
 Port: 1/8" and 1/4"
 Function: 4/2
 Cv: 0.07 to 1.0
 Voltage: 12-24 VDC, 24-120, 220-240 VAC



Capsula
 Sub-base manifold
 Port: 1/4" and 1/2"
 Function: 2/2, 3/2, 5/2, 5/3
 Cv: 0.07 to 3.17
 Voltage: 12-24 VDC, 24-120, 220-240 VAC



Dura-Matic
 Pressure and bleed valve
 Port: 1/4" and 1/8"
 Operating pressure: 20 - 150 PSI



Miniature Manual
 Port: 10-32 UNF (F), 1/8" NPT/
 10-32 UNF (F), 1/8" (F) NPT
 Function: 2/2, 3/2, 5/2
 Cv: 0.2 to 0.54

Specialty Valves



CSV
 Two-hand anti-tiedown controls
 Port: 1/8", PIF 1/4", 1/8"
 Cv: 0.11 to 1.00



LTV
 Low stress valves
 Port: 1/8"
 Function: 5/2
 Cv: 0.24



SLV
 Slide/lockout valves
 Port: 1/4", 3/8", 1/2"
 Function:
 Cv: 0.94 to 3.18



MHL
 Rotary hand valve
 Port: 1/8"
 Function: 4/2, 4/3
 Cv: 0.14



Dyna-Coil
 Mini solenoid valves
 Port: 1/4", 3/8", 1/2"
 Function: 2/2, 3/2
 Cv: 0.94 to 3.18
 Voltage: 12-24 VDC, 24-120-240 VAC



ACV
 Dash/panel mount PTO control valve
 Port: 5/32", 1/4"
 Cv: 0.053 to 0.12
 Voltage: 12-24VDC



Pneumatic Isolation Valve (PIV)
 OSHA required lockout/tagout
 Port: 1/4"-1-1/2"
 Cv: 2.0 to 54.0



BPV Series
 Pneumatic pinch valve
 Supports tubing from 0.125" - 0.500"



600/900 Series
 Pneumatic pinch valve
 Supports tubing from 0.187" - 1.625"



Versagrip® Solenoid
 Solenoid pinch valve
 Supports tubing from 0.063" - 0.375"

Function Fittings and Flow Control Valves



Flow Control Valves
 Inline and right-angle flow controls
 Port: 1/8", 1/4", 1/2"
 Cv: 0.1 to 3.1



SV/CV Series
 Shuttle/check valves
 Port: 1/8", 1/4"
 Cv: 0.4 to 0.32



QEV
 Quick exhaust valve
 Port: 1/8", 1/4", 3/8", 3/4", 1"
 Cv: 0.10 to 4.40



PBV Series
 Bleed valves
 Port: 10-32 UNF, 1/8", 1/4"



Needle Valves
 Port: 10-32 UNF, 1/8"
 Cv: 0.09



Logic Valves
 Port: 1/8", 1/4", 1/2"
 Function: binary/timers/relay
 Cv: 0.12 to 0.75



Stroke Completion Sensors
 Send air signal when rod motion stops
 Port: 1/8", 1/4", 3/8", 1/2"

Find out more



Valves

Fittings & Accessories



Metal Push-In

Nickel plated brass
 Inch - 1/8" to 1/2" O/D tube
 Metric - 4 to 12mm O/D tube
 Vacuum to 260 psi

Composite Push In

Composite
 Inch - 1/8" to 1/2" O/D tube
 Metric - 3 to 16mm O/D tube
 Vacuum to 150 psi

Barb Fittings

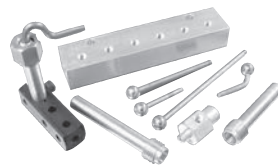
Nickel plated brass
 Inch - 1/16" to 3/8" I/D tube

Silencers

Bronze and plastic
 10-32 UNF, 1/8", 1/4", 3/8", 1/2"

Tubing

Single and multi-bore
 polyurethane
 1/8", 5/32", 1/4", 5/16", 3/8"




Manifolds

Available in a variety of port sizes, configurations, and materials including aluminum, brass, stainless steel, polypropylene, and nylon materials.

Air Jets

For cooling and blowing
 1/32 and 1/16 orifice
 Cv: 0.02 to 0.10



Find out more 



MFD Series

Actuators



MACQ

Extruded body cylinders, interchangeable dimensions
12mm - 100mm bores

MTC Series

Extruded thruster with bronze or ball bushing
12mm - 63mm bores

MHRQ

Double rack and pinion
4 model sizes

Air Preparation



MGAFC

Combination unit
1/8" to 1/2" NPT
Pressure range: 20 to 130 PSI
Temperature range: 23°F to 158°F

MGAFR Series

Filter / regulator
1/8" to 1" NPT
Pressure range: 20 to 130 PSI
Temperature range: 23°F to 158°F

MGAF

Filter
1/8" to 1" NPT
Pressure range: 20 to 145 PSI
Temperature range: 23°F to 158°F

MGAFB

Coalescing filter
1/8" to 1/2" NPT
Pressure range: 20 to 145 PSI
Temperature range: 23°F to 158°F

MGAL

Lubricator
1/8" to 1" NPT
Pressure range: 7 to 145 PSI
Temperature range: 23°F to 158°F



MGAR

Regulator
1/8" to 1" NPT
Pressure range: 7 to 130 PSI
Temperature range: -4°F to 158°F

MSR

Miniature regulator
1/8", 1/4" NPT
Pressure range: 7 to 130 PSI
Temperature range: -4°F to 158°F

MGZ

Pressure relief valve
1/8" to 1/2" NPT
Pressure range: 0 to 130 PSI
Temperature range: -4°F to 158°F

MGV

Soft start / dump valve
1/8" to 1/2" NPT
Pressure range: 36 to 130 PSI
Temperature range: -4°F to 158°F

Grippers



Parallel Grippers with Roller Bearings

Gripper
Pressure range 15-100 PSI
depending on bore size
6, 10, 16, 20, 25, 32, 40 mm bores

Parallel Multi-Finger Grippers

Gripper
Pressure range 22-100 PSI
120 cycles per minute
16, 20, 25, 32, 40, 50, 63 mm bores

Angular Grippers

Gripper
Pressure range 15-100 PSI
depending on bore size
180 cycles per minute
6, 10, 16, 20, 25, 32 mm bores

180° Grippers

Gripper
Pressure range 21-100 PSI
60 cycles per minute
10, 16, 20, 25, 32 mm bores



Actuators



Air Preparation

Valves



M3V
 Inline solenoid valve
 Port: 1/8" NPT
 Function: 3/2
 Cv: 0.051
 Voltage: 12-24VDC, 24-120VAC



M4V
 Inline solenoid valve
 Port: 1/8", 1/4", 3/8", 1/2" NPT
 Function: 5/2, 5/3
 Cv: 0.67-2.79
 Voltage: 12-24VDC, 24-120VAC



MPS
 Manifold Powerstrip™
 2 to 8 stations for M3V/M4V valves
 Voltage: 12-24VDC, 24-120VAC
 Temperature range: 0°F to 120°F



M4M
 Inline solenoid valve
 Port: 1/4" NPT
 Function: 5/2
 Cv: 1.40
 Voltage: 12-24VDC, 24-120VAC



M4H
 Inline mechanical valve
 Port: 1/8", 1/4" NPT
 Function: 5/2, 5/3
 Cv: 0.67 - 1.39



M4A
 Inline solenoid and air pilot
 Port: 1/8", 1/4" NPT
 Function: 5/2, 5/3
 Cv: 0.78 - 2.79



M4L
 Inline mechanical valve
 Port: 1/8", 1/4" NPT
 Function: 5/2
 Cv: 0.78, 1.39



M4F
 Foot pedal valve
 Port: 1/4" NPT
 Function: 5/2
 Cv: 0.78



MASC
 Flow control valve
 Port: 1/8", 1/4", 3/8", 1/2" NPT



→ online configurators available for cylinders, valves, and FRLs:
www.bimba.com



Norgren Vacuum Generators

NVP Series

Modular Venturi Generators
 Vacuum levels up to 29.5"Hg
 Vacuum flows up to 28.0 SCFM


NJ Series

Rugged Cylindrical Generators
 Vacuum levels up to 28.0"Hg
 Vacuum flows up to 28.0 SCFM


NVDF Series

Variable Flow Vacuum Generators
 Vacuum levels up to 25.0"Hg
 Vacuum flows up to 120.0 SCFM


NCDF Series

Adjustable Air Amplifier/Blowers
 Vacuum levels up to 9.0"Hg
 Vacuum flows up to 330.0 SCFM


NDF Series

Material Transfer Generators
 Vacuum levels up to 11.0"Hg
 Vacuum flows up to 600.0 SCF


NMVS Series

Multi-stage Generators
 Vacuum levels up to 28.0" Hg
 Vacuum flows up to 20.0 SCFM

Norgren Vacuum Cups

Vacuum Cups

A wide range of styles,
 materials, and sizes

Norgren End-of-Arm-Tooling & Accessories

NCRVT

Fully integrated vacuum tool
 designed for collaborative robots


Custom Solutions

Custom vacuum end-of-arm
 tooling designs available


Spring Levelers

Mechanical compensation
 for uneven surfaces


Mounting Brackets

To connect spring levelers
 and accessories to extrusions


Manifold Blocks

For mounting vacuum cups to
 extrusions and/or distributing
 vacuum to multiple locations

Warning

Improper selection, misuse, age or malfunction of components used in systems can cause failure in various modes. The system designer is warned to consider the failure modes of all component parts and to provide adequate safeguards to prevent personal injury or damage to equipment or property in the event of such failure modes. System designers and end users are cautioned to consult instruction sheets and specifications available from the factory. The system designer/end user is responsible for verifying that all requirements for the application are met.

Warranty

The products described herein are warranted subject to seller's Standard Terms and Condition of Sale, available at seller's website.

⚠ WARNING: Cancer and Reproductive Harm - www.p65warnings.ca.gov.

Find out more →





For further information, scan this QR code or visit www.bimba.com



Whether it's a modification to an existing product, a custom design for your application, or specific industry need, we deliver exceptional solutions.



1. Opportunity Identification

Identify potential opportunities for us to solve a customer problem through the creation of a specialty device.



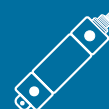
4. Quote

The quoting process engages manufacturing engineers and Bimba's global procurement team to develop a cost-effective and competitively priced solution.



2. Application Discovery

Engage with the customer to ascertain their application needs and begin preliminary talks via phone call, "Talk to an Engineer" meeting, or in-person.



5. Prototype

Dedicated resources in engineering and manufacturing concentrate on prototype builds to test real-world viability, using real and simulated products.



3. Design

Our design teams work with your engineers and technical support staff to understand the problem and begin creating concepts to address the customer's challenges.



6. Production Build

Bimba is positioned to leverage its full weight of manufacturing resources to supply production quantities in a timely fashion.

Due to our policy of continuous development, Bimba reserve the right to change specifications without prior notice.

BIM-PG-07/22

Bimba
25150 S. Governors Hwy
University Park, IL 60484
Tel: +(1) 708 534 8544
Fax: +(1) 708 235 2014
Toll Free (US): 800-44-BIMBA

Bimba is part of Norgren, a world leader in motion and fluid control technologies. Norgren operates four global centres of technical excellence and a sales and service network in 50 countries, as well as manufacturing capability in Brazil, China, Czech Republic, Germany, India, Mexico UK and the USA.

For information on all Norgren companies visit

www.norgren.com

Supported by distributors worldwide.

