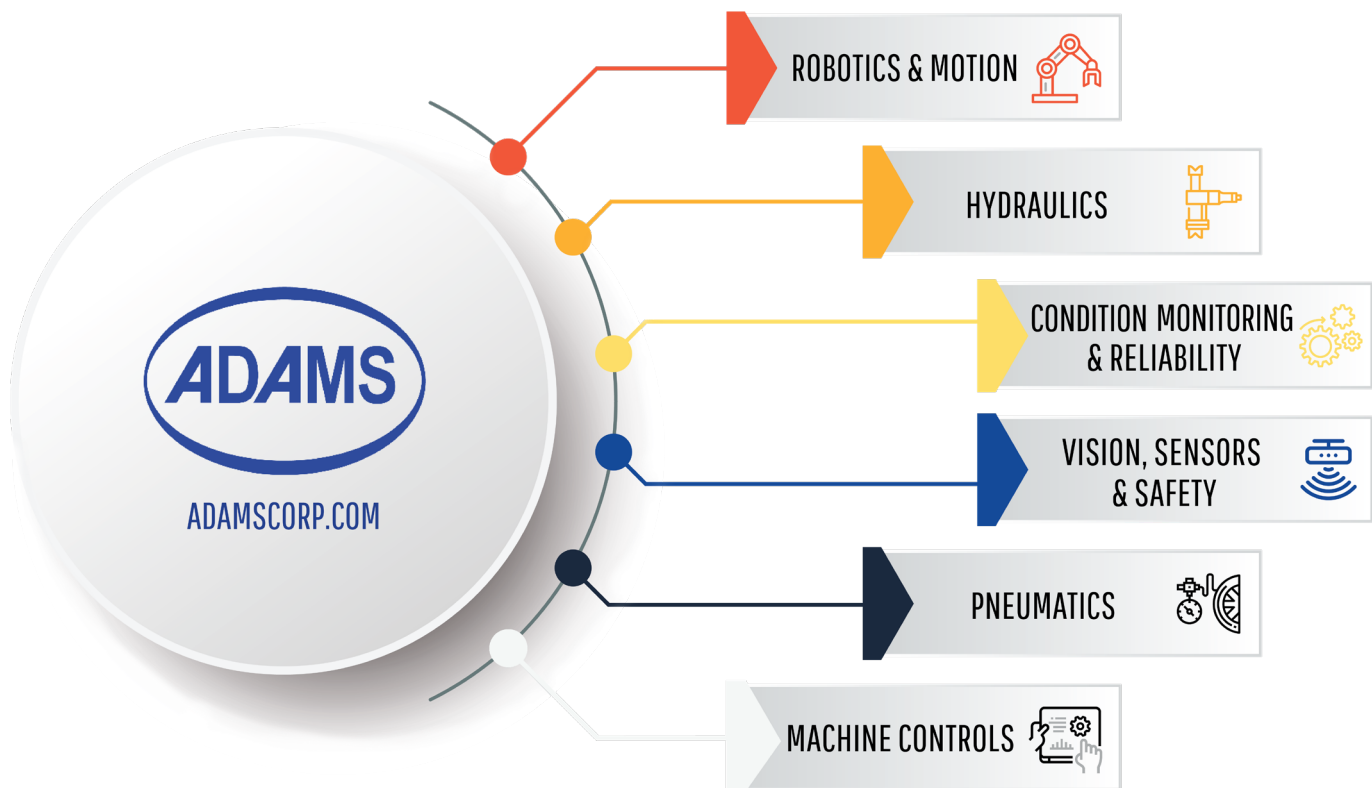




Excellence in Service since 1960

EXPERTS IN FLUID POWER, VISION, ROBOTICS & AUTOMATION SINCE 1960

Have you challenged us to find more **PROFIT**
in your business?



WHY ADAMS?

Our **mission** is to strengthen American manufacturing by increasing our customer's competitiveness in the global marketplace through increased productivity and profitability.

Our **vision** is to be the industry leader in innovative and sustainable design through successful application implementation ranging from components to integrated solutions.

Our team of strategically located fluid power and automation specialists can work as an extension of your engineering and maintenance teams to assist in achieving your plant productivity goals. **Our resources are your resources.**

Follow us for reliability and
automation related content



Tampa, FL
Birmingham, AL
Phone: (800) 282-4165
sales@adamscorp.com
<https://adamscorp.com>

ROBOTICS & MOTION

80/20 | ASYRIL | BALLUFF | IMI BIMBA | DE-STA-CO | DELTA | ENIDINE | FANUC | FLEXIBOWL | IGUS | KAWASAKI | KOLLMORGEN | LEUZE | MECADOMIC | MINER | MOOG | PHD | PIAB | QC CONVEYORS | ROBOTIQ | THOMSON LINEAR | UNIVERSAL ROBOTS

Robotics: Collaborative, Topload, Scara, 6/7 Axis, Cartesian, Gantry, Linear

End of Arm Tools: Adaptive Grippers, 3-Finger Grippers, Vacuum Grippers, Vision & Force Sensing, Torque Sensor, Structural Aluminum, Custom EOAT

Robotic Accessories: Covers/Suits, Guarding, Cable Guidance, Flexible Feeding, Pedestals & Mounts, Safety Solutions, Ergonomic Assistance, Software, Tool Changers

Motion: Electromechanical Actuators, Servo & Stepper Motors, Servo & Stepper Drives, Variable Frequency Drives, Motion Controllers, Linear Motors, Bearing & Shafting

Conveyors: Washdown, Belt- Style, Cleated, Alpine, Z-Style, Modular Plastic Chain, Gripper Elevator

HYDRAULICS

ACCUMULATORS INC | BIMBA | CONTINENTAL HYDRAULICS | DAMAN | DELTROL | DK LOK | FABCO | FLUIDYNE | GEM SENSORS | HARTMANN CONTROLS | HEDLAND | HYDRAFORCE | HYDRONIC | DONALDSON HY-PRO FILTRATION | PHD | MAGNALOY | MILWAUKEE CYLINDER | MOOG | NOSHOK | STAUFF | TRD | UNIST

Fluid Conditioning: Filtration, Dehydrators, Varnish Removal, Filter Carts, Filter Skids, Heater Skids, Filter Panels, Coalescing Filters, Breathers, Water Removal, Rental Fleet, Offline Contamination Equipment

Power Units: Compact, L-Style, JIC, Gravity Fed, Washdown, Custom Builds, Troubleshooting, System Design

Valves and Actuators: Cylinders, Rotaries, Servo & Proportional Valves, Directional Control Valves, Cartridge Valves, Custom Manifolds

Pumps and Motors: Gear Pumps, Piston Pumps, Vane Pumps, Servo Pumps, HPU's, Hydraulic Motors, AC Motors

Hydraulic Accessories: Fittings, Manifolds, Quick Disconnects, Gauges, Flow Meters, Sensors

CONDITION MONITORING & RELIABILITY

BALLUFF | DONALDSON HY-PRO FILTRATION | PERMA | URBAN IO

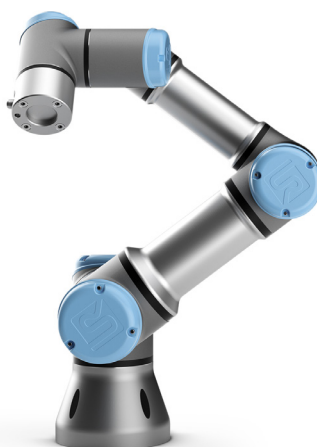
Wired Condition Monitoring: Condition Monitoring Tool Kit, IO-Link with Real-Time Vibration, Contact Temperature, Pressure, & Humidity Sensing

Wireless Condition Monitoring: Web-Based Platform for Vibration, Contact & Ambient Temperature, Process Loop, Differential Pressure, On/Off, Moisture, Meter Count, Humidity, Current, Battery Test

Hydraulic and Lube Oil: Filters, Offline Contamination Equipment, Total System Cleanliness

Automatic Lubrication: Single & Multi-Point Lubrication Units, Lubrication Route Surveys, Lubrication Unit Installation, System Design

COGNEX



KOLLMORGEN

A REGAL REXNORD BRAND



Note: Product Availability Subject to Location

VISION, SENSORS & SAFETY

80/20 | BALLUFF | CCS | COGNEX | CONTRINEX | EDMUNDS OPTICS | GEM SENSORS | LEUZE | LMI TECHNOLOGIES | MORITEX | SMART VISION LIGHTS | URBAN IO

Vision: 2D & 3D Machine Vision, 1D & 2D Barcode Readers & Verifiers, Lensing, Lighting, Structural Mounting, Software, Edge & Deep Learning Solutions

Machine Safety: Light Curtains & Area Scanners, Safety Controllers, Safety Relays, Structural Guarding, Door & Gate Switches, Safety Sensors, E-Stop, Safety Risk Assessments, Safety Radar

Sensors: Wireless Solutions, Condition Monitoring, Ultrasonic, Proximity, Inductive, Inclination, Photoelectric, Linear & Rotary Encoders, Pressure, Temperature, Flow, Level, I/O Link Devices

RFID: Low Frequency (LF, High Frequency (HF, Ultra-High Frequency (UHF, Read/Write Antennas, Controllers, Communication Modules, Data Carriers, Processor Units

PNEUMATICS

ADSENS TECHNOLOGY | ADVANCE AUTOMATION | ATLAS COPCO | BEKO TECHNOLOGIES CORP | IMI BIMBA | CAMOZZI | CEJN INDUSTRIAL CORP | DURAVALVE | FABCO | FIRESTONE | GREENCO CORPORATION | HEDLAND | LEGRIS | MAC VALVES | MASTER PNEUMATIC | MILWAUKEE CYLINDER | NOSHOK | ORIGA | PHD | PIAB | PNEUMADYNE | POLYCONN | TRD | TSUNAMI | WILKERSON

Valves: In-Line, Manifold, Field-Bus Solutions, IO-Link, Custom Manifolds, Cartridge Valves, Safety Valves, Proportional Pressure, Proportional Flow, Servo Pneumatic, Ball Valves

Actuators: Compact, Thrusters, Grippers, Rotaries, Clamps, Rod-Less Cylinders, Custom Cylinders, Air Bags, Servo Pneumatic

Vacuum: Suction Cups & Soft-Grippers, Centralized & Decentralized Pumps & Ejectors, IO-Link, Large Area Grippers, Standard & Custom EOAT, Food Grade, Ergonomic Lifters, Sensors, Filters

Air Preparation: Filters, Regulators, Lubricators, Combination Units, Soft Starts, Dump Valve, Manual Lockout, Safety, Integrated Sensing, Moisture Removal, Dryers

Pneumatic Accessories: Manifolds, Fittings, Gauges, Air Motors, Flow Meters, Pressure Switches

MACHINE CONTROLS

BALLUFF | CONTRINEX | DATA PANEL | DELTA | JVL MOTION | KOLLMORGEN | LEUZE | MAPLE SYSTEMS | MENCOM | MOOG | MURRELEKTRONIK | PATLITE

Controllers: PLCs, Industrial PCs, Motion Controllers, VFDs, Vehicle Controls, Safety Controllers

Cabinet Components: Power Supplies, Ethernet Switches, Relays, HMIs, Stack Lights & Signal Towers, Panel & Control Interfaces, Transformers, Cable Entry Systems

Connectivity: I/O Distribution, Network Solutions, Valve & Sensor Connectors & Cord Sets, Junction Blocks, Field-Wireable Connectors, Bulk Cables, Food Grade, Washdown Connectors & Cord Sets



Note: Product Availability Subject to Location

HELPING OUR CLIENTS WITH HANDS-ON SUPPORT



Best-in-Class Training

**Adams offers training for
Cognex and Universal Robots.**

Our 2-day, Universal Robots certified hands-on training course focuses on building programs, learning safety, and working with integrated products such as grippers, conveyors, and sensors. Our Cognex Training covers both Spreadsheet and Deep/Edge Learning methods which involves hands-on training on both the hardware and software to enable the user to solve their own applications.



Maximize Your Profits with our CPR Analysis

Customer Profit Reinforcement closes the loop on optimization projects and helps justify future expenditures. Pre- or post-project, our team will work with your team to document additional yearly profit realized when moving to a new technology. The Finance team loves these reports.

	Option 1	Option 2	Option 3
Offering	Hardware Only	Jump-Start Assistance	Full Turnkey
Phone Support	✓	✓	✓
On-Site Support		✓	✓
Programming Time		✓	✓
Complete Robot/ Camera Programming			✓
Commitment to a Scope of Work			✓
Install			✓
Factory Acceptance Test (FAT)			✓
Site Acceptance Test (SAT)			✓
Machine Training			✓
Price	Hardware Cost Only	Hardware Cost Plus Daily Rate	TBD Based on Project Scope

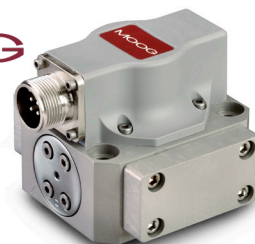
Donaldson
HY-PRO™



piab



MOOG



MURR
ELEKTRONIK

FANUC

BALLUFF

perma

80/20® Inc.
The Industrial Erector Set®

urban.io